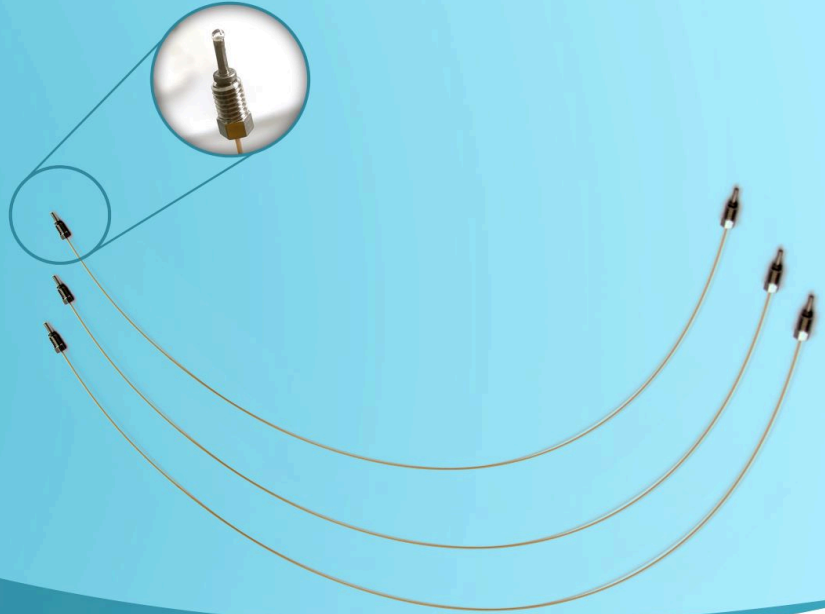


PUCKA® Fingertight Fitting System

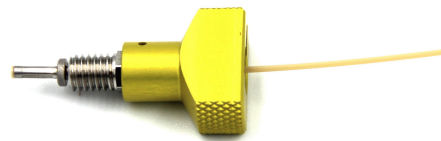
Reach the true chromatography



PUCKA® Fingertight Fitting System

The PUCKA UHPLC fingertight fitting system simplifies your LC system and column connections and provides consistent performance with lightning-fast peaks.

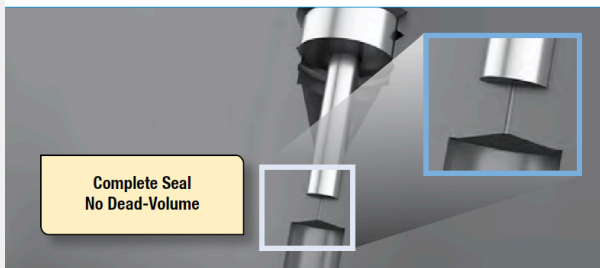
By using our fingertight tool, different inner diameter tubing of PEEKsil and Steel Stainless can be pressurized to 1,500bar below 120°C.



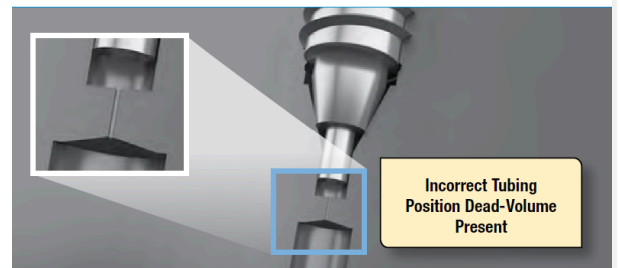
PUCKA® fitting vs. Poorly Connected Conventional Fittings

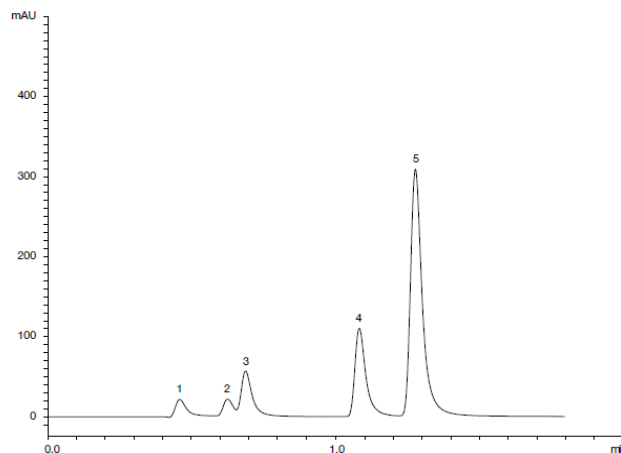
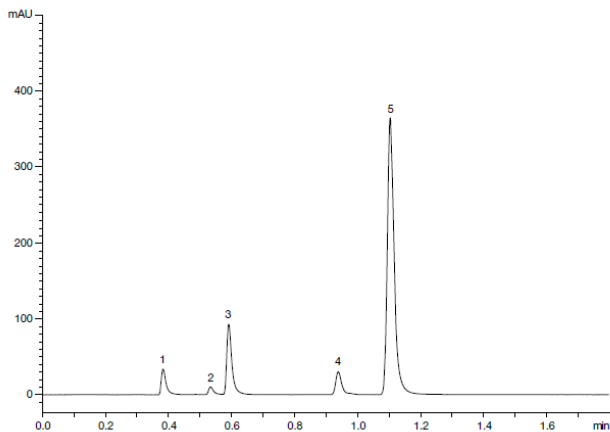
Poorly connected fittings are often the causes of carryover, band broadening, and peak tailing. PUCKA fitting offers zero dead-volume connections every time.

PUCKA® Fittings



Standard Nut Ferrule Fittings





Column Part No.: E131SDO
 Packing material: ExOrbit 100 C18, 2.6 μ m
 Length: 100 mm
 ID: 2.1 mm
 Elution type: Isocratic (35:65)
 Mobile phase A: Water
 Mobile phase B: Acetonitrile
 Flow rate: 0.5 ml/min
 Detection: UV at 254 nm
 Sample: 1. Urine 2. Impurity 3. Acetophenone 4. Toluene 5. Naphthalene

Ordering information

PEEKsil

PEEKsil Double-Sided 10-32 PUCKA® system

Stainless Steel

Stainless Steel Double-Sided 10-32 PUCKA® system

Part No.	ID(μ m)	Length(mm)	Part No.	ID(μ m)	Length(mm)
2007206	20	60	2008110	100	100
2006208	20	80	2008115	100	150
2007210	20	100	2008125	100	250
2007215	20	150	2008130	100	300
2007230	20	300	2008150	100	500
2007250	20	500	2008160	100	600
2007260	20	600	2008175	100	750
2007275	20	750	2008100	100	1000
2007510	50	100	2008210	125	100
2007515	50	150	2008215	125	150
2007525	50	250	2008230	125	300
2007530	50	300	2008250	125	500
2007550	50	500	2008260	125	600
2007575	50	750	2008275	125	750
2007500	50	1000	2008200	125	1000
2007110	100	100	2008310	254	100
2007115	100	150	2008315	254	150
2007125	100	250	2008330	254	300

2007150	100	500	2008350	254	500
2007100	100	1000	2008375	254	750

LC Column / Tubing ID Recommendation Chart

Flow Range	Nano-flow	Micro-flow	Normal-flow	Prep-flow		
Column ID	50 µm - 150 µm	300 µm - 500 µm	800 µm - 1.5 mm	2.0 mm - 4.6 mm	5.0 mm - 8.0 mm	9.0 mm - 20 mm
Tubing ID	20 µm	50 µm	75 µm	100 µm	125 µm	254 µm